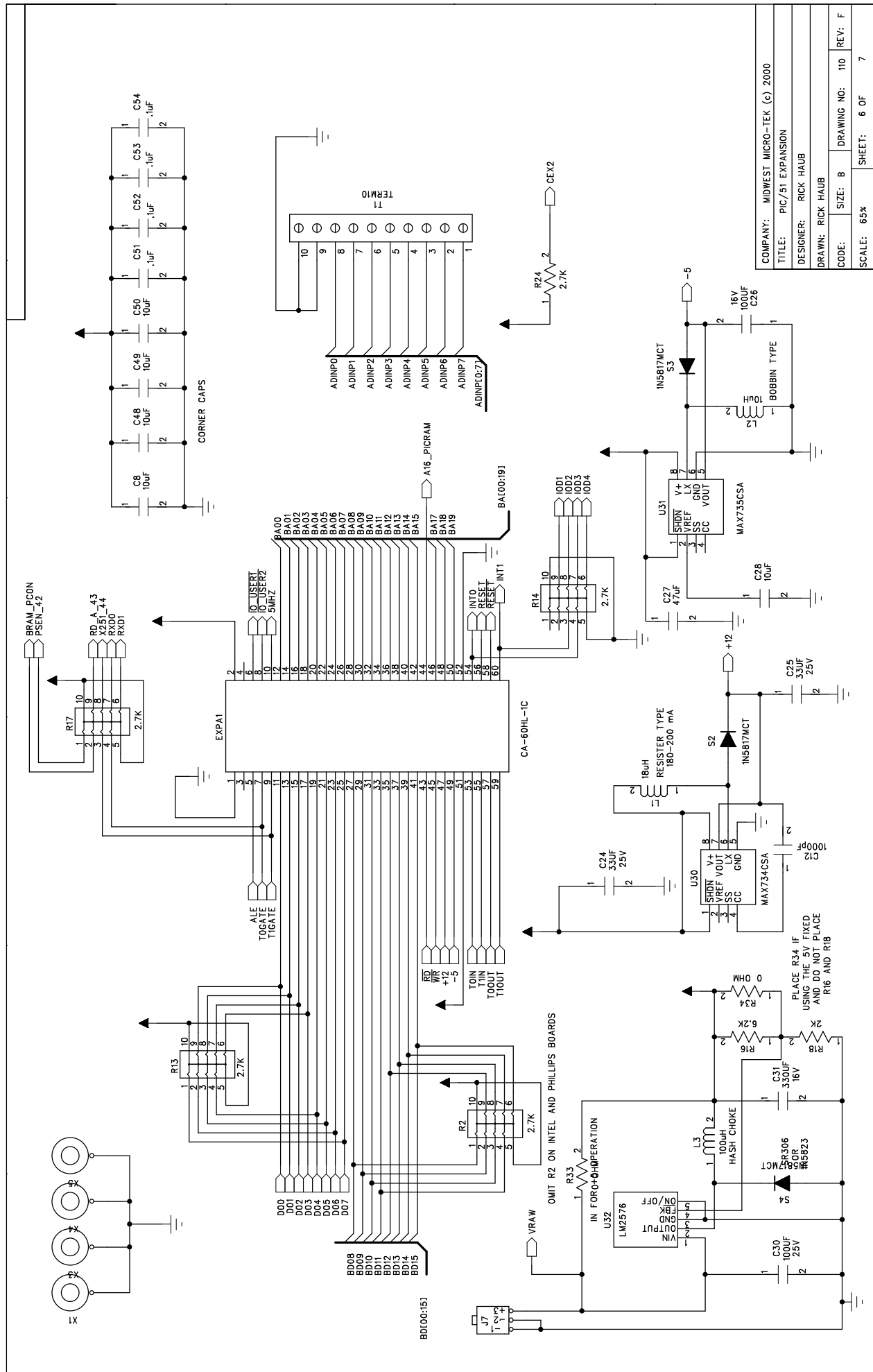


SERIAL PORT0 IS RXD AND TXD ONLY
BUT IT CAN BE RS485

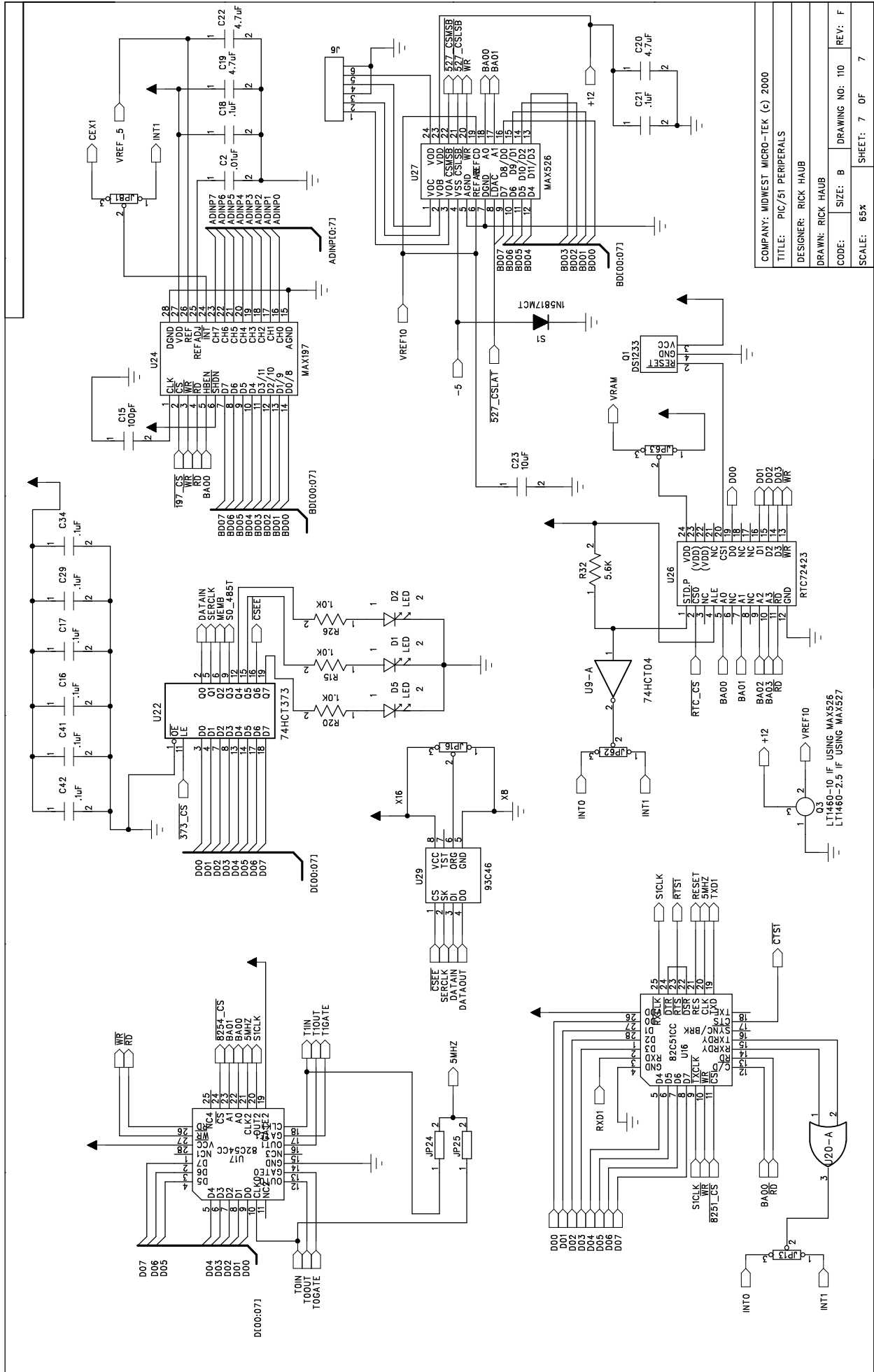
SERIAL PORT 1 IS RXD, TXD, CTS, AND RTS
AND CAN BE RS485 ALSO
THE RS485 TOGGLE FOR PORT0 IS ON THE .373

SERIAL PORT2 IS RXD AND TXD ONLY
PORT TWO IS AVAILABLE ON THE DALLAS CHIP ONLY

COMPANY:	MIDWEST MICRO-TEK (c) 2000
TITLE:	PIC/51 SERIAL
DESIGNER:	RICK HAUB
DRAWN:	RICK HAUB
CODE:	SIZE: B
SCALE:	DRAWING NO: 110
	REV: F
	SHEET: 5 OF 7



COMPANY:	MIDWEST MICRO-TEK (c) 2000
TITLE:	PIC/51 EXPANSION
DESIGNER:	RICK HAUB
DRAWN:	RICK HAUB
CODE:	SIZE: B
SCALE:	65%
DRAWING NO:	110
REV:	F
SHEET:	6 OF 7



COMPANY: MIDWEST MICRO-TEK (C) 2000			
TITLE: PIC/51 PERIPHERALS			
DESIGNER: RICK HAUB			
DRAWN: RICK HAUB	SIZE: B	DRAWING NO: 110	REV: F
CODE:			
SCALE: 65%	SHEET: 7	OF	7

LT1460-10 IF USING MAX526
LT1460-2.5 IF USING MAX527